



ORIENTEERING EVENT VILNIUS 2015

The organizers are pleased to invite you to the traditional 3-day orienteering event in Vilnius. The event is held annually since 1991.

ORGANIZER

Event organizer is orienteering sport club PERKŪNAS.

Event manager – Tomas Stankevičius.

Event head secretary – Darius Sadeckas.

PROGRAMME

The competition will take place on May 8-10, 2015 in and around Vilnius.

Day 1 (May 8, 2015). Short distance. Start at 17:00, (MTB-O – 16:00)

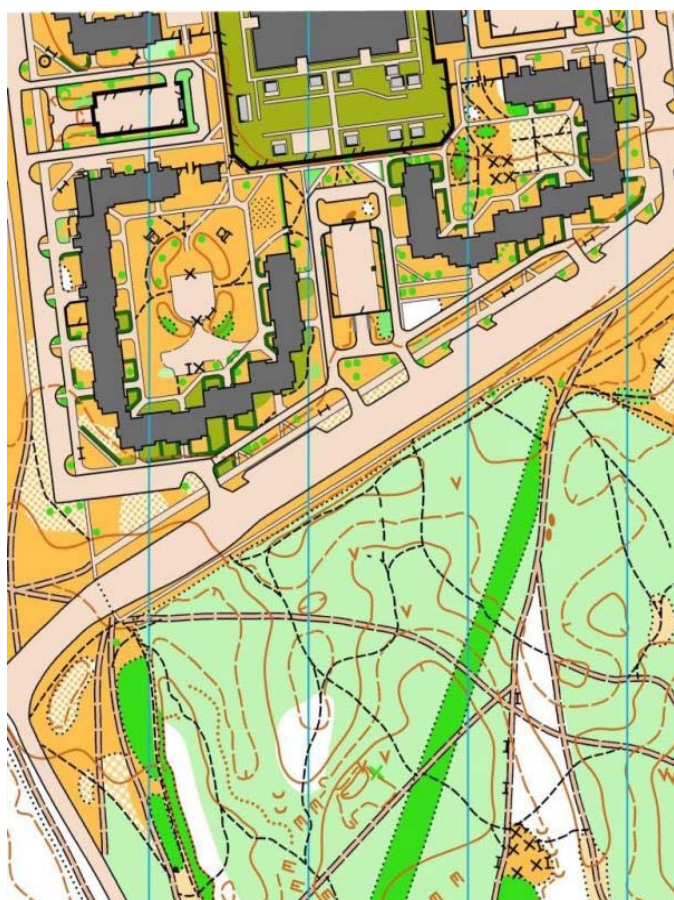
Day 2 (May 9, 2015). Long distance. Start at 11:00, (MTB-O – 10:00).

Day 3 (May 10, 2015). Middle distance. Start at 10:30 (pursuit for foot-o groups); (MTB-O – 9:30).

MAP AND TERRAIN

Day 1. Map – Pilaitė (mapped and printed in 2015).

Competition center will be in Pilaitė district in Vilnius.

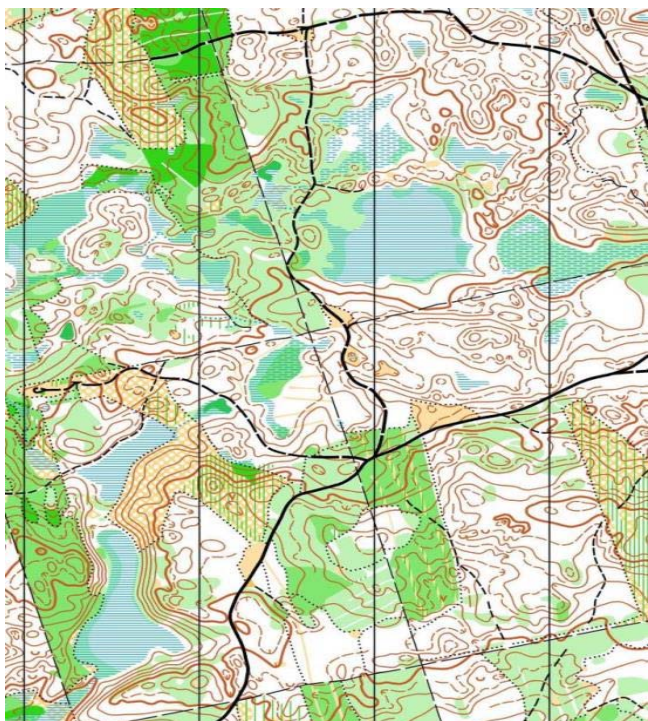


The course will go through both a forest and a residential housing area. The height difference between the highest and lowest points is 30 meters.

Map covers an area of 1.7 km²
Scale 1: 5000, contour interval of 2.5 meters.
Map drawn in 2015.

Day 2. Map – Baravykinė (mapped and printed in 2014-2015). A new 4 km² area has been added to the existing map.

Competition center will be in Vilnius district municipality, about 32 km from Vilnius center, at Lithuania-Belarus state border.

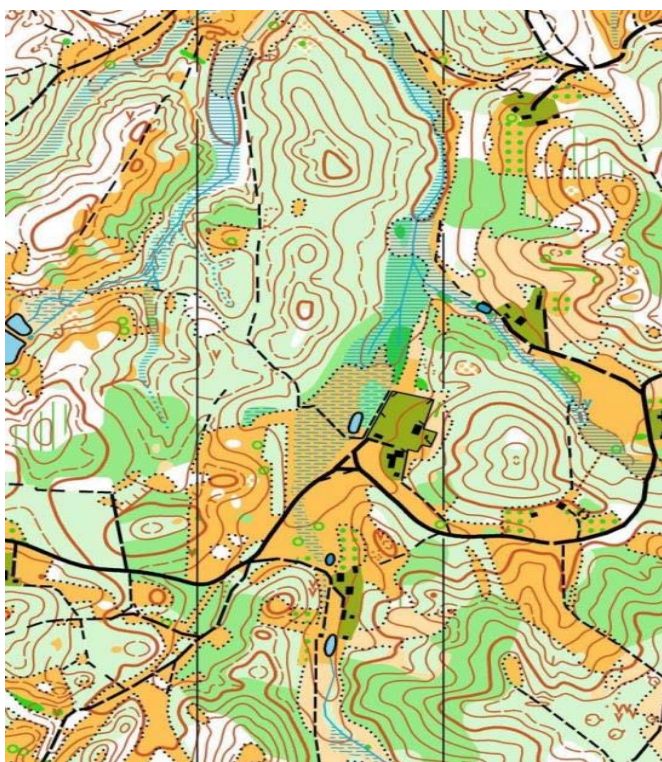


Map area of good and medium runability forest. Terrain varied. Hills and slopes dominate. There are few marsh areas with small landforms. Moderate path and road network. The terrain is unique as it is a continuation of the legendary Kotlovka forest. The terrain borders with the Belarus state border.

Map covers an area of 10 km²
Scale 1: 10 000, contour interval of 2.5 meters.
Map drawn in 2014-2014.

Day 3. Map – Liepkalnis (updated in 2015).

Competition center will be near Naujininkai district in Vilnius.



Map area of good and medium runability forest. Terrain is dominated by hills, slopes and ravines. There are many private houses in the area. Moderate path and road network.

Map covers an area of 5km²
Scale 1: 10 000, contour interval of 2.5 meters.
Map drawn in 2015.

CLASSES

Competition will be held in these classes:

M/W 10, 12, 14, 16, 18, 20, 21E (elite), 21S (short), 35, 40, 45, 50, 55, 60, 65, 70.

M/W MBE (MTB-O elite), MBA (shorter course), MB14, MB16, MB18, MB40.

Open (an open classes with no entries in advance and no start lists).

M/W 10 (controls points on roads or paths).

In case there are less than 5 participants in one class, the organizers have a right to join classes.

PUNCHING SYSTEM

SPORT Ident for all classes.

SPORT Ident card rent: M/W10-18 – 0.3 € per day, other classes – 1 € per day.

PRIZES

The winners will be determined by summing up the total time of the 3 days.

Prizes will be awarded to the first 3 competitors in each class (in M/W21E classes – to the first 6 competitors).

ENTRY FEES AND PAYMENT

The deadline for entries is May 1, 2015. On-line entry form: <http://www.dbtopas.lt/takas/en/varz/2015044>

You can also send an entry by e-mail okperkunas@gmail.com (name, surname, club, country, class, SI card number, and other necessary information).

ENTRY FEES	M/W 10-18		M/W 20, 70		W/M 21-65		MTB adults / juniors / children	
	3 days	1 day	3 days	1 day	3 days	1 day	3 days	1 day
before May 1, 2015	10 €	4 €	16 €	6 €	22 €	8 €	22/ 16/ 10 €	8/ 6/ 4 €
after May 1, 2015 (if there are vacancies)	13 €	5 €	20 €	7 €	28 €	10 €	28/ 20/ 13 €	10/ 7/ 5 €

Open classes – 8 €/per day.

Discount (of 10%) is allowed for schoolchildren teams of at least 25 members and for a families of at least 3 members (at least one child). Discount is valid only if competitors participate all 3 days. It is necessary to specify the request for discount in the entry form.

For registered, but the defaulting participant, penalty should be paid (50% of the entry fee).

Payment: AB Swedbank (SWIFT/BIC code HABALT22, account no. LT337300010002447257) or cash at finish area.

REGISTRATION

Registration will be held 14:00 – 16:00 at the first day's (May 8, 2015) finish area. Changes after May 4, 2015 will be accepted only in the same class for a fee of 0.5 € per change. Change of class is treated as a new entry.

ACCOMMODATION

Accommodation options:

Hotel [Campanile Vilnius](#) (Minsko pl. 14, Vilnius, Liepkalnis), vilnius@campanile.lt, tel. +370 5 203 22 82. Special discount code: Orientacininkai (orienteerers) (17-29 €), third day competition center.

[Green Vilnius Hotel](#) (Karoliniškės/Pilaitė), info@greenhotel.lt, tel. +370 5 250 0695. Special discount code: Perkūnas (10-29 €), near first day competition center.

Hostel [Downtown Forest](#) (Old Town), info@downtownforest.lt, tel. +370 5 262 3113. Special discount code: orientacininkai (orienteers) (12 €).

LEU guest house, sveciunamai@leu.lt (Naujamiestis), tel. +370 5 213 0509, (10-12 €).

You can find many other accommodation possibilities at <http://www.vilnius-tourism.lt/>

INFORMATION www.perkunas.lt, okperkunas@gmail.com

Tomas Stankevičius, tel. +370 687 11142

Darius Sadeckas, tel. +370 699 37127 or email sdarius@gmail.com

